

## Vegetation Management Act Regional Ecosystem and Remnant Map-Version 6.1

Based on 2006 Landsat TM imagery

Requested By: NIKKI@SAVESTRAADDIE.COM  
Date: 29 Nov 11 Time: 09.51.53

Centered on Coordinate:

Latitude: -27.6262 Longitude: 153.4448 (decimal degrees)  
Bioregion: Southeast Queensland

A remnant map covers areas not covered by a regional ecosystem map.

Defined map areas are labelled with the regional ecosystem (RE) code along with the percentage breakdown if more than one RE occurs within the area. Detailed definitions of regional ecosystems are available from [www.derm.qld.gov.au/REDD](http://www.derm.qld.gov.au/REDD). Defined map areas smaller than 5ha may not be labelled.

Regional ecosystem linework has been compiled at a scale of 1:100 000, except in designated areas where a compilation scale of 1:50 000 is available. Linework should be used as a guide only. The positional accuracy of RE data mapped at a scale of 1:100 000 is +/-100 metres. The extent of remnant regional ecosystems as of 2006, depicted on this map is based on rectified 2006 Landsat TM imagery (supplied by the Statewide Landcover and Trees Study (SLATS), Department of Environment and Resource Management (DERM)).

Some watercourse lines are derived from GeoScience Australia 1:250 000 mapping.

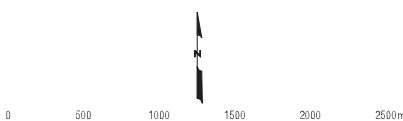
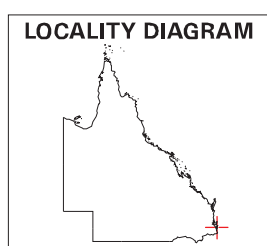
**Disclaimer:**  
While every care is taken to ensure the accuracy of this product, the Department of Environment and Resource Management and MapInfo Australia Pty Ltd, makes no representations or warranties about its accuracy, reliability, completeness or suitability for any particular purpose and disclaims all responsibility and all liability (including without limitation, liability in negligence) for all expenses, losses, damages (including indirect or consequential damage) and costs which you might incur as a result of the product being inaccurate or incomplete in any way and for any reason.

All datasets are updated as they become available to provide the most current information as of the date shown on this map.

Additional information is required for the purposes of land clearing or assessment of a regional ecosystem map or PMAV applications. For further information go to the web site: [www.derm.qld.gov.au/vegetation](http://www.derm.qld.gov.au/vegetation) or contact the Department of Environment and Resource Management.

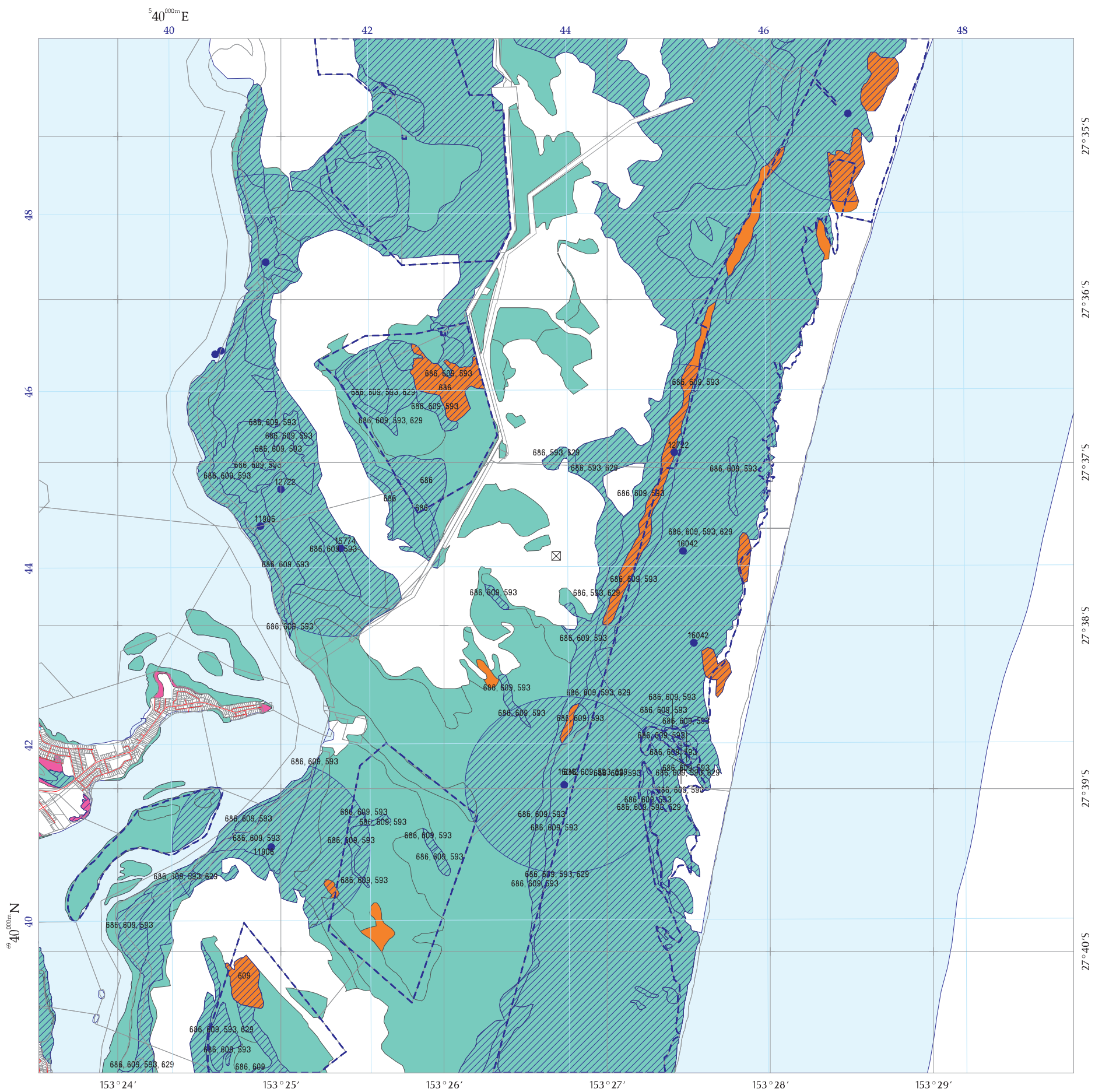
Digital regional ecosystem data is available in shapefile format, for Lot on Plans from [www.derm.qld.gov.au/REDATA](http://www.derm.qld.gov.au/REDATA) or from DERM for larger areas.

- Remnant vegetation containing endangered regional ecosystems
- Remnant vegetation containing of concern regional ecosystems
- Remnant vegetation that is a least concern regional ecosystem
- Remnant vegetation under Section 20AH of the VMA
- Non-remnant
- Plantation Forest
- Dam or Reservoir
- Remnant Vegetation
- PMAV Category X area
- Great Barrier Reef Wetlands
- Vegetation Management Act Essential Habitat  
For further information on VMA Essential Habitat, please see the attached VMA Essential Habitat map.
- Subject Lot
- Watercourse (Stream order shown as black number against stream where available)
- Bioregion boundary
- Roads  
© Pitney Bowes Business Insight 2011
- National Park, Conservation Area State Forest and other reserves
- Cadastral line  
Property boundaries shown are provided as a locational aid only.
- Towns
- Coordinate entered



Horizontal Datum: Geocentric Datum of Australia 1994 (GDA94)

© The State of Queensland, 2011

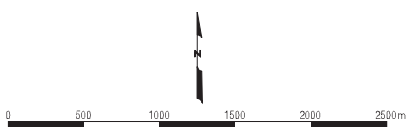
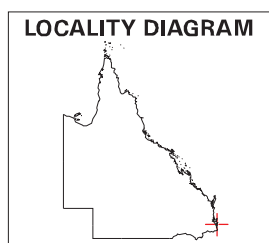


### Vegetation Management Act Essential Habitat Map Version 3.1

- Remnant vegetation containing endangered regional ecosystems
- Remnant vegetation containing of concern regional ecosystems
- Remnant vegetation that is a least concern regional ecosystem
- Remnant vegetation under Section 20AH of the VMA
- Non-remnant
- Plantation Forest
- Dam or Reservoir
- Remnant Vegetation
- PMAV Category X area
- Vegetation Management Act Essential Habitat
- Vegetation Management Act Essential Habitat Species Records
- Subject Lot
- Roads  
© Pitney Bowes Business Insight 2011
- National Park, Conservation Area State Forest and other reserves
- Cadastral line  
Property boundaries shown are provided as a locational aid only.
- Towns
- Coordinate entered

Requested By: NIKKI@SAVESTRADDIE.COM  
Date: 29 Nov 11 Time: 09.51.56

Centered on Coordinate:  
Latitude: -27.6262 Longitude: 153.4448 (decimal degrees)



Labels for the Vegetation Management Act Essential Habitat are centred on the subject lot (1.1km surrounding and including a Lot on Plan). Labels correlate to the label field in the attached essential habitat database.

Regional ecosystem linework has been compiled at a scale of 1:100 000, except in designated areas where a compilation scale of 1:50 000 is available. Linework should be used as a guide only. The positional accuracy of RE data mapped at a scale of 1:100 000 is +/-100 metres. The extent of remnant regional ecosystems as of 2006, depicted on this map is based on rectified 2006 Landsat TM imagery (supplied by SLATS, Department of Environment and Resource Management).

**Disclaimer:**  
While every care is taken to ensure the accuracy of this product, the Department of Environment and Resource Management and MapInfo Australia Pty Ltd, makes no representations or warranties about its accuracy, reliability, completeness or suitability for any particular purpose and disclaims all responsibility and all liability (including without limitation, liability in negligence) for all expenses, losses, damages (including indirect or consequential damage) and costs which you might incur as a result of the product being inaccurate or incomplete in any way and for any reason.

All datasets are updated as they become available to provide the most current information as of the date shown on this map.

Additional information is required for the purposes of land clearing or assessment of a regional ecosystem map or PMAV applications. For further information go to the web site: [www.derm.qld.gov.au/vegetation](http://www.derm.qld.gov.au/vegetation) or contact the Department of Environment and Resource Management.

Digital regional ecosystem data is available in shapefile format, for Lot on Plans from [www.derm.qld.gov.au/REDATA](http://www.derm.qld.gov.au/REDATA) or from DERM for larger areas.